



GREYBROOK HOUSE

MAYFAIR



FENTON WHELAN

LONDON

This Grade II listed, six-storey Art Deco building was designed by Sir John Burnett and Partners, who were also responsible for the King Edward VII gallery at the British Museum and Unilever House.

Completely refurbished to a phenomenally high standard, the interior of Greybrook House reprises to spectacular effect the Art Deco theme found on the exterior and the Claridge's façade opposite.

The exquisite craftsmanship, everywhere in evidence, allows for a seamless blending of one of history's most recognisable design periods with more contemporary elements.

From the street, bronze doors set into the monumental white Portland stone façade give access to a high ceilinged lobby whose refined details and elegant lift carriage give promise of luxury to come.

Those expectations are amply fulfilled when on leaving the lift by private code you enter a hushed domain of extravagant beauty combining jewel like details, bespoke joinery, natural stone and subtle lighting.

Technology is discreetly and seamlessly layered into each apartment. Located in the heart of Mayfair, London's most exclusive residential and retail district, Greybrook House is a building exemplifying the convenience, luxury and drama to which the best of modern living aspires.



PLATE A
 28 BROOK STREET *Greybrook House*
 ARCHITECT *Sir John Burnett & Partners*



PLATE B
 28 BROOK STREET *Greybrook House entrance*

1929



PLATE C
28 BROOK STREET *Bechstein* showroom
ARCHITECT *Sir John Burnett & Partners*

1952



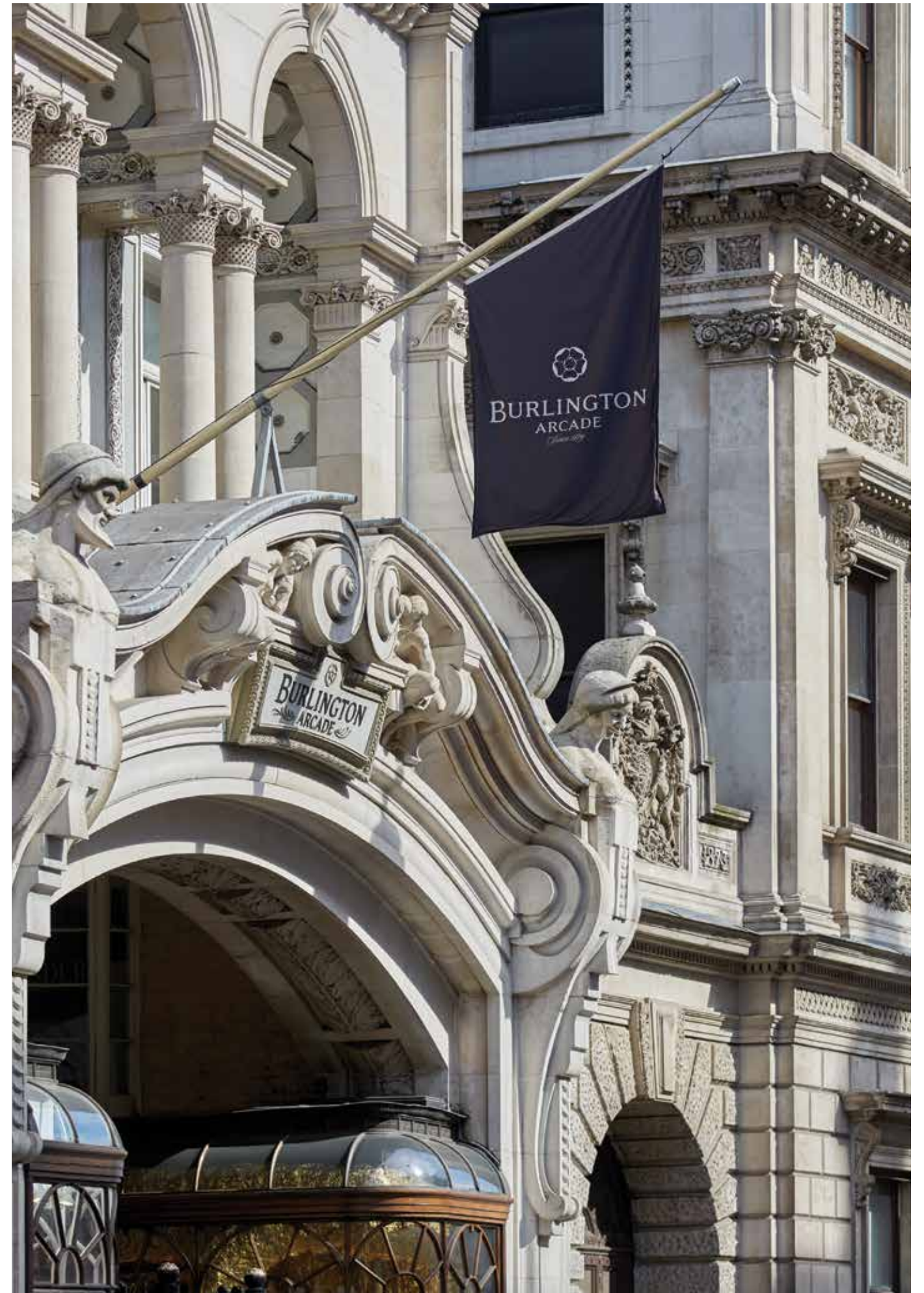
PLATE D
28 BROOK STREET *Allied Ironfounders* showrooms with brick mural
BRICK MURAL DESIGNER *Trevor Tennant*



MAYFAIR



BROOK STREET



BURLINGTON ARCADE



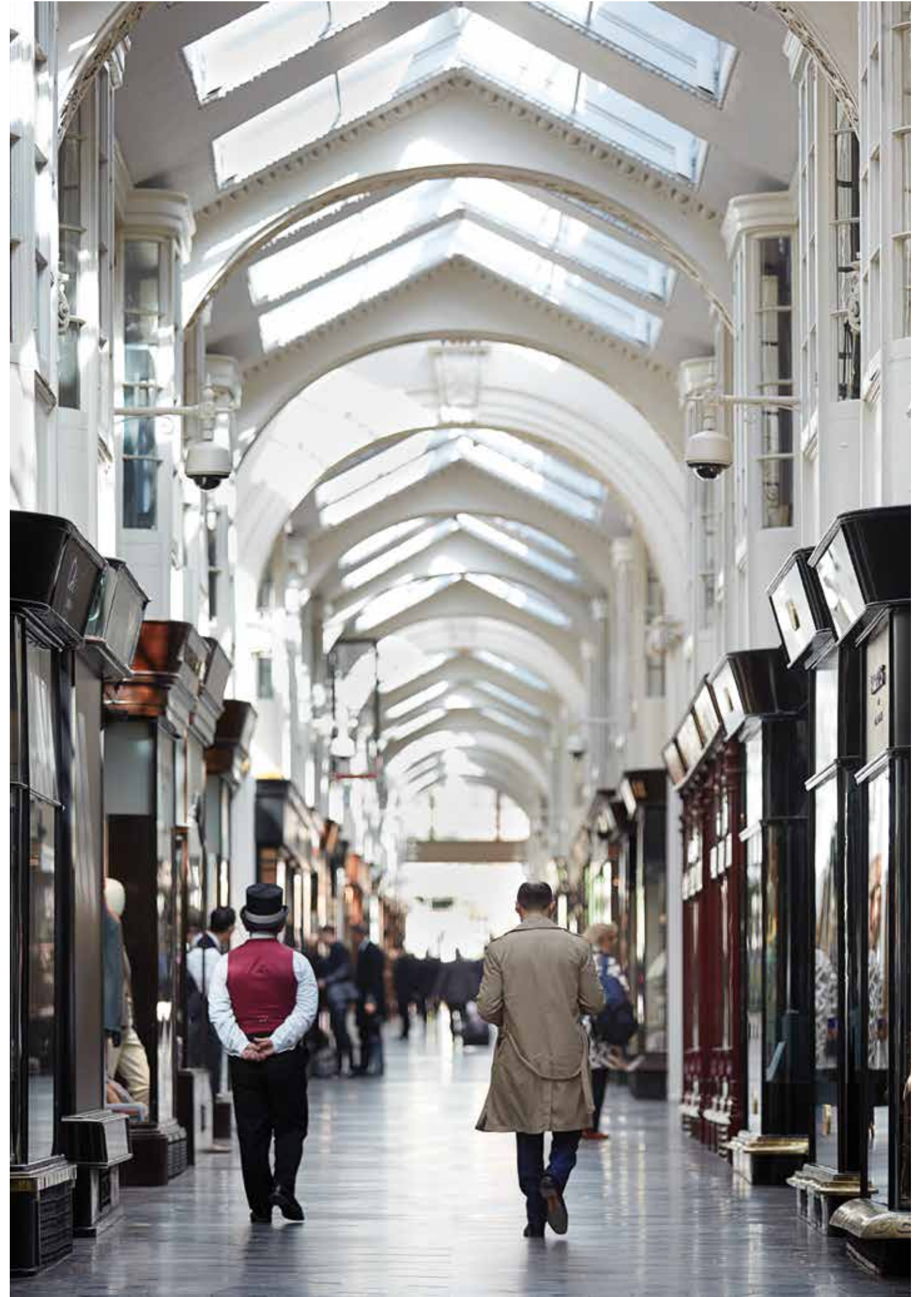
NEW BOND STREET



GROSVENOR SQUARE

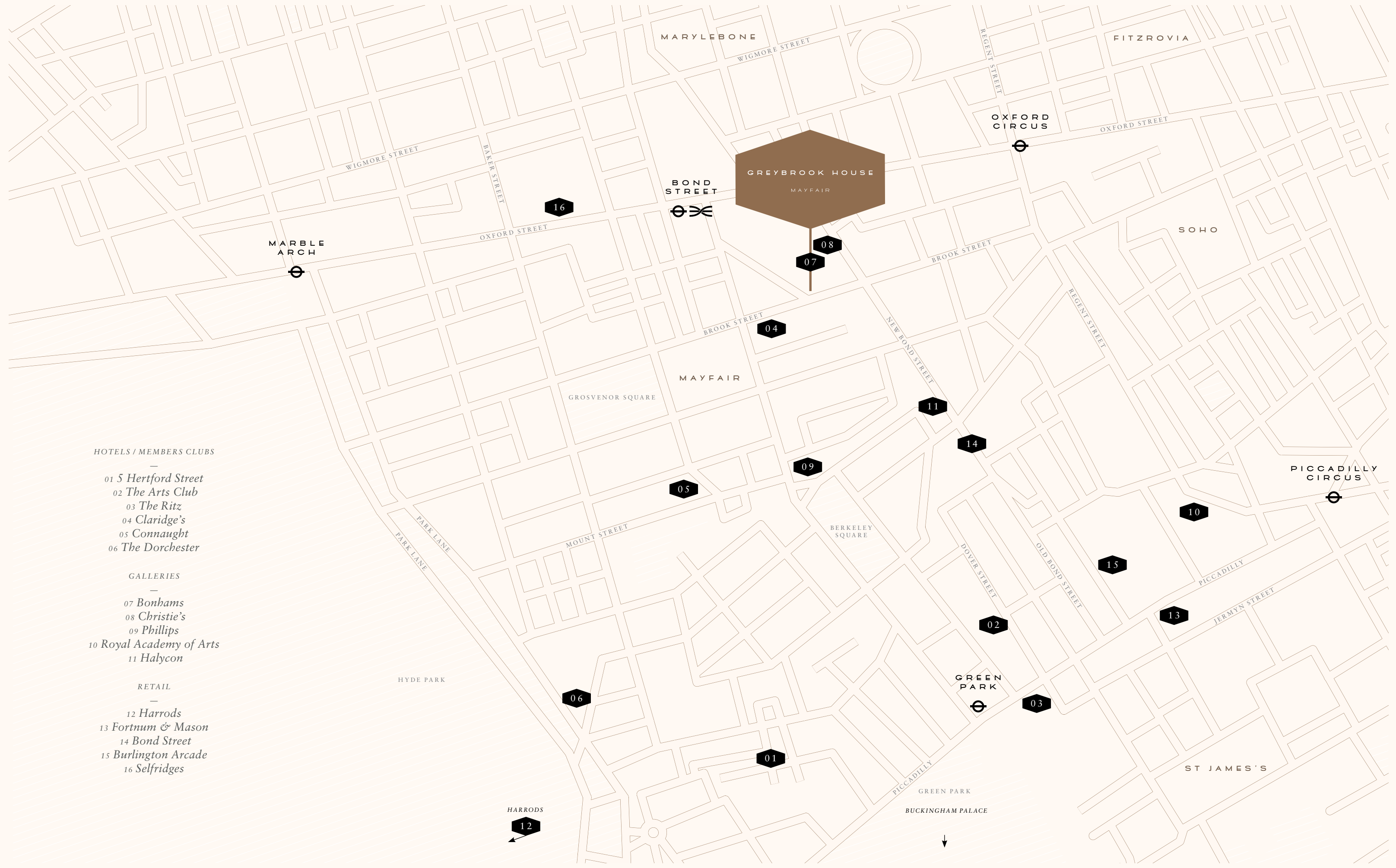


NEW BOND STREET



BURLINGTON ARCADE





HOTELS / MEMBERS CLUBS

- 01 Hertford Street
- 02 The Arts Club
- 03 The Ritz
- 04 Claridge's
- 05 Connaught
- 06 The Dorchester

GALLERIES

- 07 Bonhams
- 08 Christie's
- 09 Phillips
- 10 Royal Academy of Arts
- 11 Halycon

RETAIL

- 12 Harrods
- 13 Fortnum & Mason
- 14 Bond Street
- 15 Burlington Arcade
- 16 Selfridges

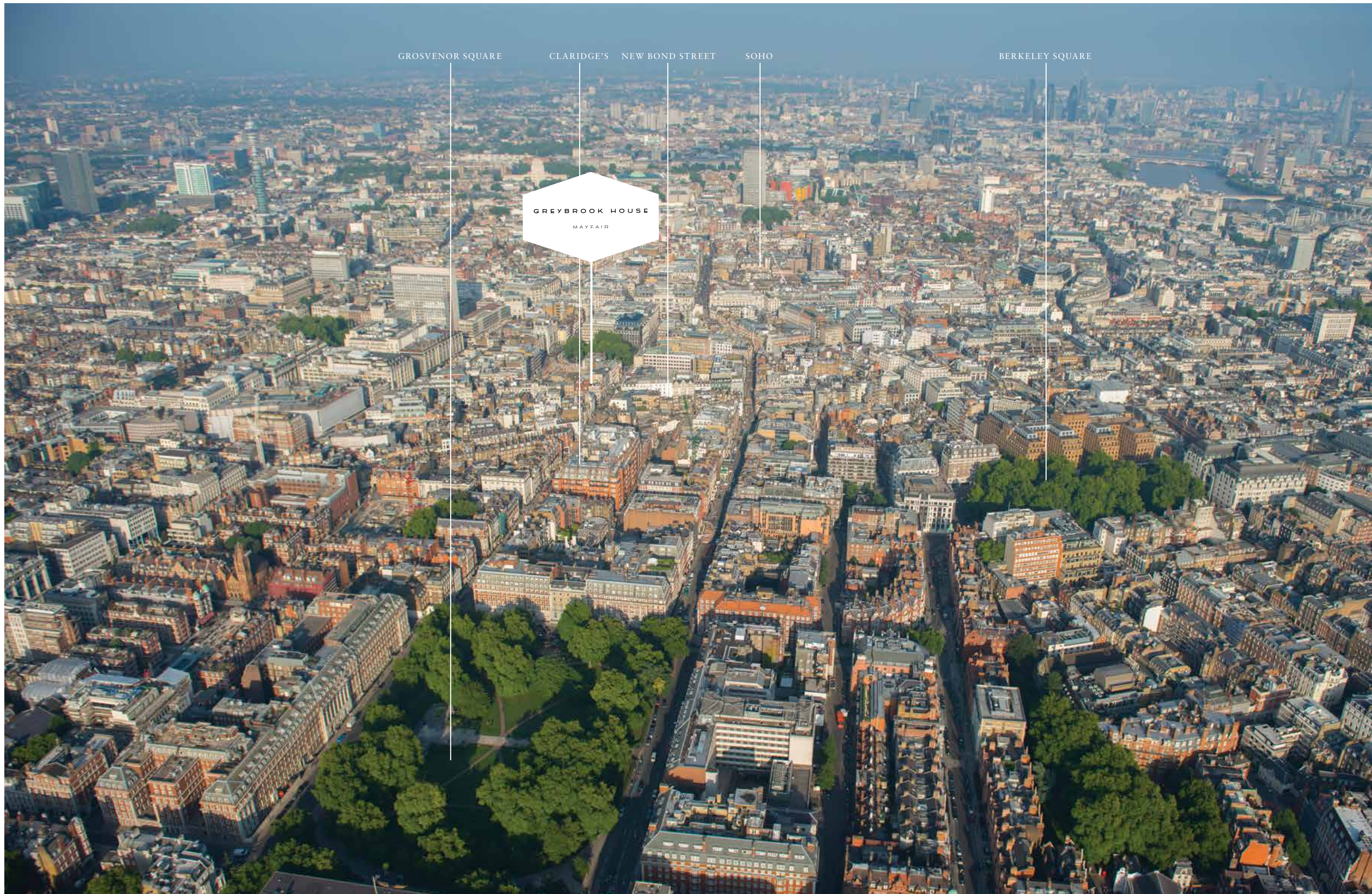
GROSVENOR SQUARE

CLARIDGE'S NEW BOND STREET

SOHO

BERKELEY SQUARE

GREYBROOK HOUSE
MAYFAIR





THE BUILDING

















FLOOR PLANS

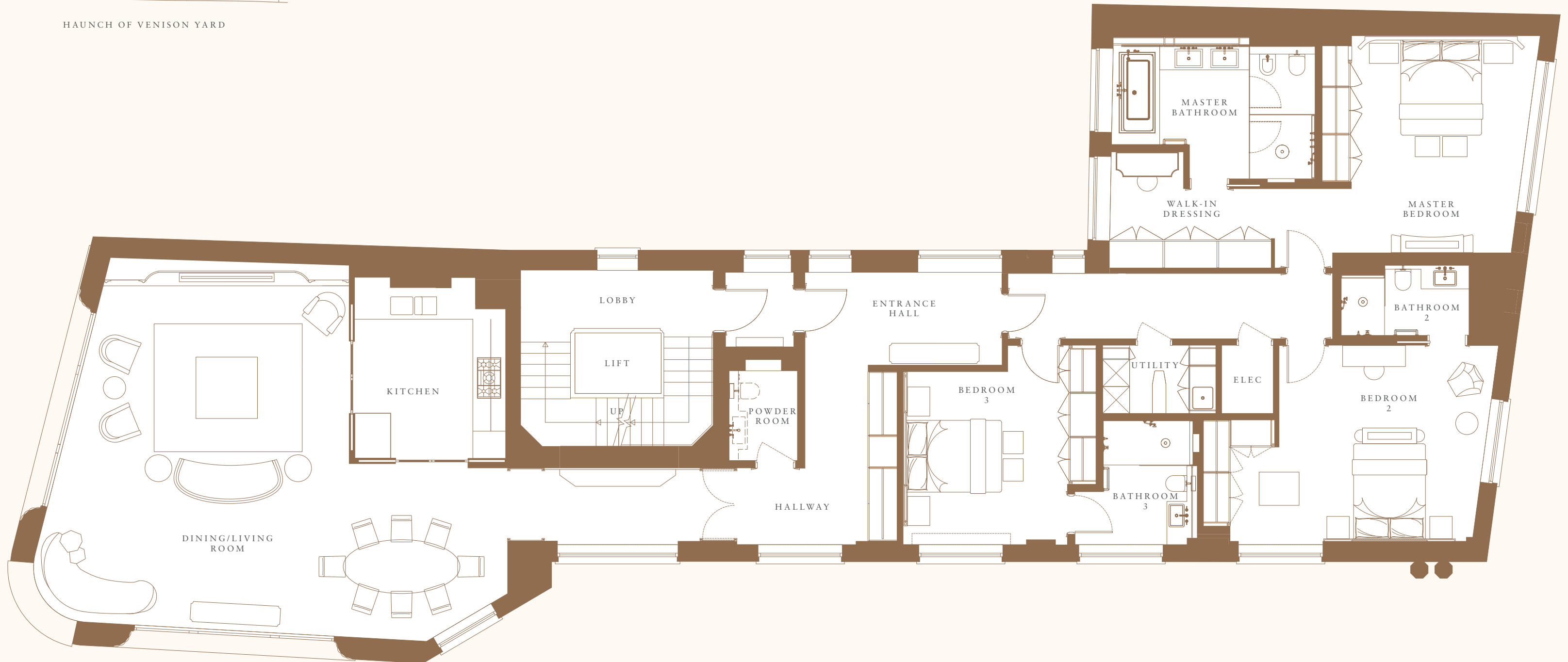
APARTMENTS 1-3



HAUNCH OF VENISON YARD

Floors
1,2&3

2700 sq ft



LIVING	34.4" x 24"6'
KITCHEN	12.1" x 10"8'
MASTER BEDROOM	15.7" x 13"8'
BEDROOM 2	16.1" x 14"4'
BEDROOM 3	12.5" x 11"9'



THE PENTHOUSE

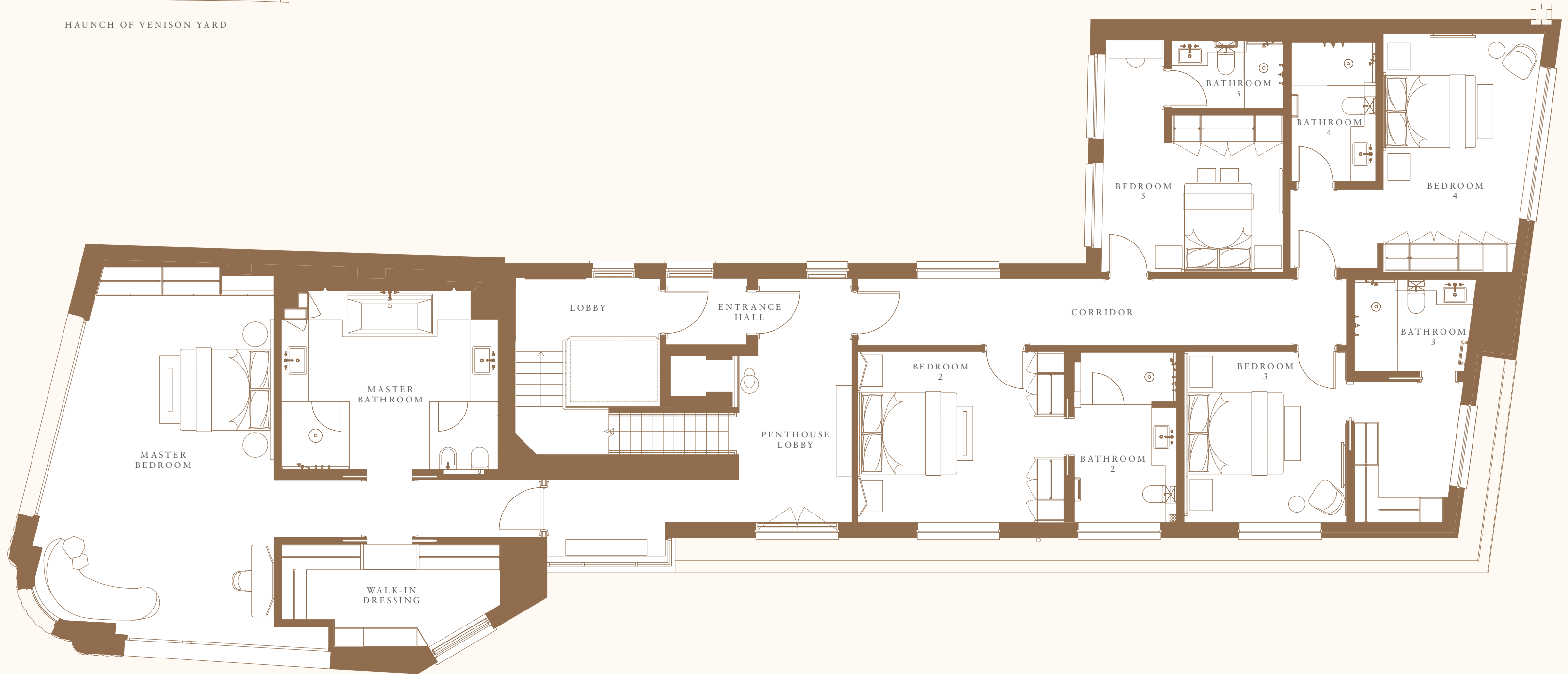
PENTHOUSE LOWER



Penthouse Lower

HAUNCH OF VENISON YARD

Floor
4



MASTER BEDROOM	24" x 17"1'
BEDROOM 2	13.1" x 12"5'
BEDROOM 3	12.5" x 11"8'
BEDROOM 4	15.1" x 11"5'
BEDROOM 5	13.1" x 9"2'

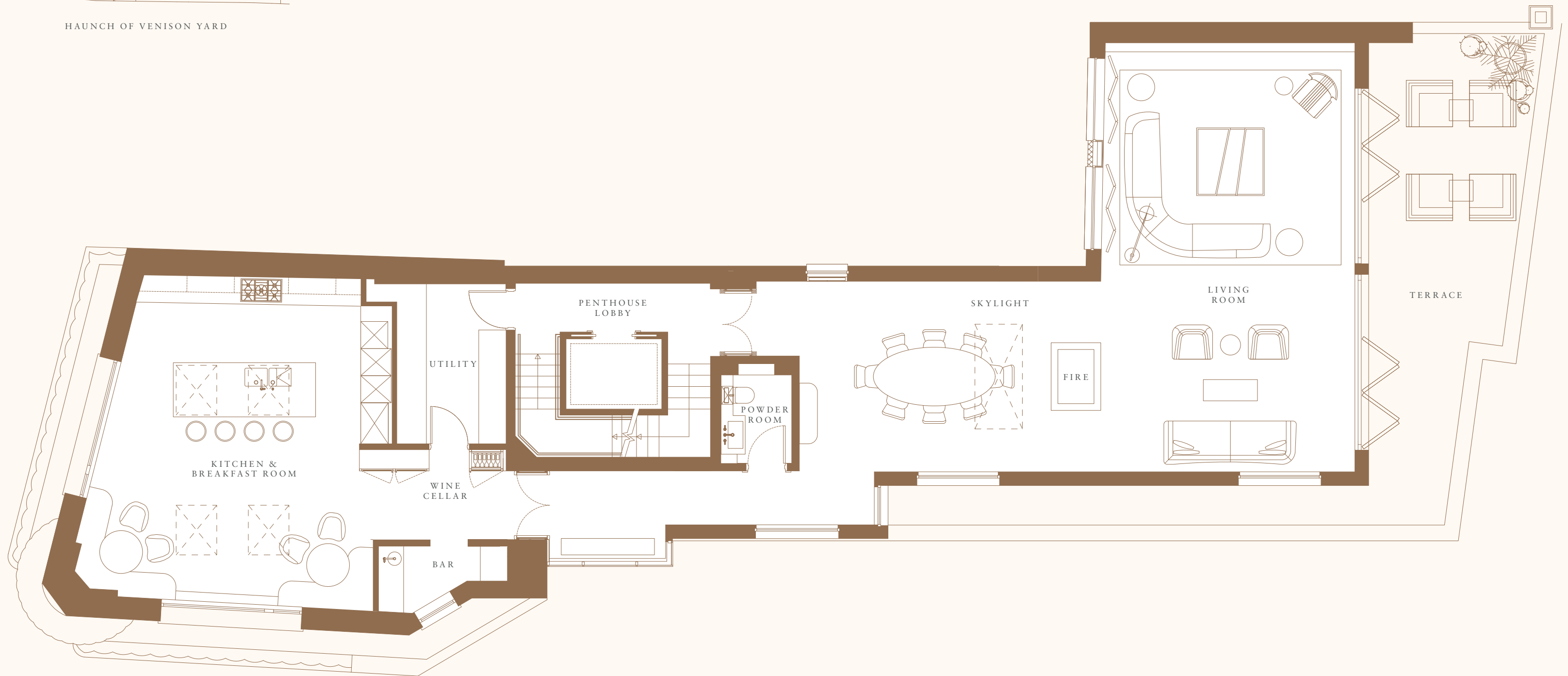
PENTHOUSE UPPER



Penthouse Upper

HAUNCH OF VENISON YARD

Floor
5



LIVING	31.2" x 18"4'
DINING	21.2" x 13"8'
KITCHEN	24.3" x 21"6'

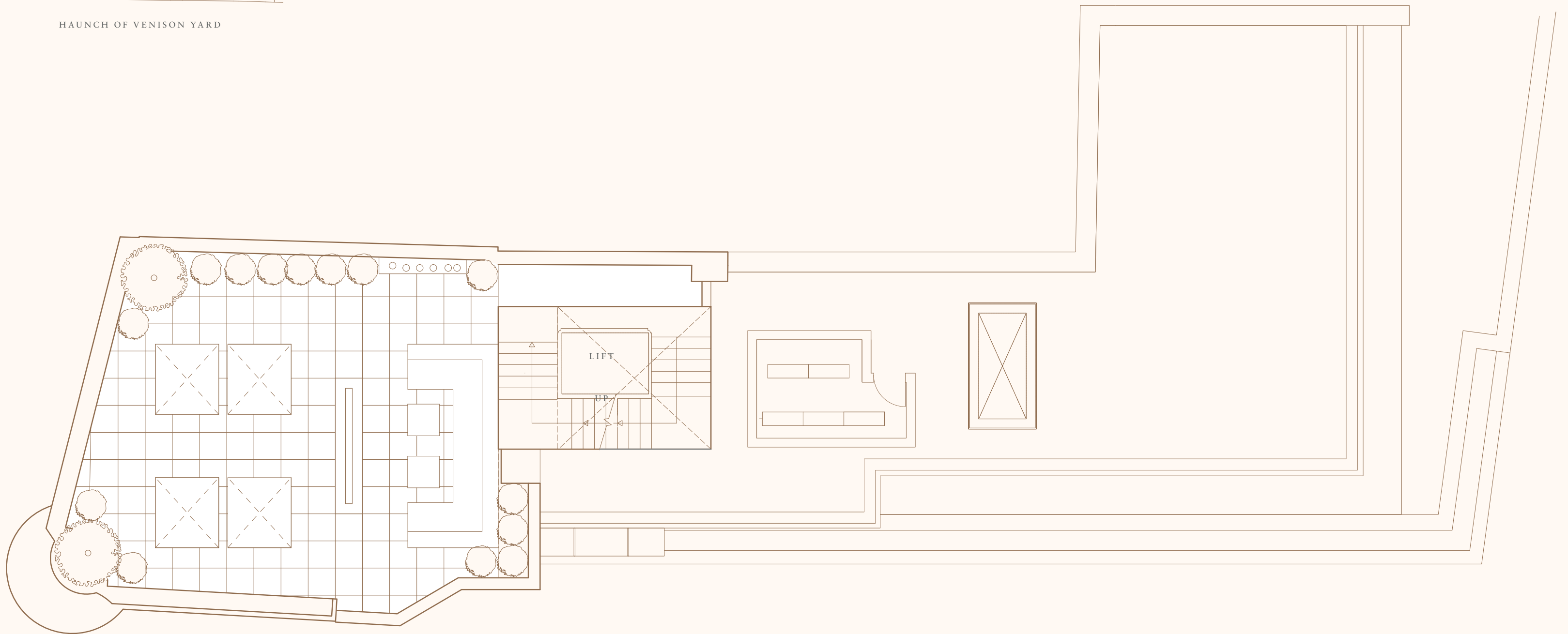
PENTHOUSE TERRACE

Penthouse Terrace



HAUNCH OF VENISON YARD

Floor
6



INTERNAL	4599 sq ft
TERRACES	1216 sq ft
STAFF FLAT	748 sq ft
TOTAL	6563 sq ft

VISION

We are dedicated to constantly renewing London as well as applying our team's expertise to other world cities and environments.

VALUES

We are extremely proud of our ongoing commitment to modernity and innovation. Our London designs have a timeless strength – they draw on heritage but face firmly towards the future. Each project begins with a unique idea and a mission to exceed previous incarnations. Our driving force is creativity; our hall-mark is flawless execution. The result, we believe, is some of the finest designs, regenerations and developments to be found anywhere in the World.

INTERIOR DESIGN

Whether it is the reimagining of a private home, the creation of an exclusive private members club, or designing interiors of whole city developments, Fenton Whelan Design's team reflects our clients' personal sense of style.

We highlight our clients' individuality through every aspect of the design process from specifically commissioned artwork to the smallest decorative detail. Fenton Whelan Design studio offers a fully integrated resource to beautifully fit and dress interiors.

DESIGN MANAGEMENT

Integrity in design and open collaboration with our clients steers our decision making process and sharpens our focus.

Our approach is personal, detailed and consistent. After learning our clients' taste, we commission the most sought-after artisans to bring these dreams and visions to life. The result is a relaxed and seamless symmetry throughout.



VANBRUGH PRIME

SELLING AGENTS

**BERKSHIRE
HATHAWAY** | Kay & Co
HomeServices

Martin Bikhit
DIRECT +44 (0)20 7908 2662
MOBILE +44 (0)7802 273 717
OFFICE +44 (0)20 7486 6338
m.bikhit@kayandco.com

MISREPRESENTATION ACT

Fenton Whelan Limited and Other agents give notice that 1) the particulars are a general outline set only as guidance for intending purchasers. They do not constitute, nor constitute part of, an offer, or contract; 2) any descriptions, areas, measurements or dimensions are to be considered approximate and should not be relied on as statements or representation of fact. 3) The particulars and images were prepared from preliminary plans and particulars and are intended only as a guide. They may change during construction and the final finishes may differ to those on the particulars.

All computer-generated images are indicative only, December 2016.

Design: Egelnick + Webb



FENTON WHELAN
LONDON

**BERKSHIRE
HATHAWAY** | Kay & Co
HomeServices